

• MAS3 1/2 Circuit Board

to ISRT-CN107

to MASPAN-CN101

to MASPAN-CN102

to MASPAN-CN103

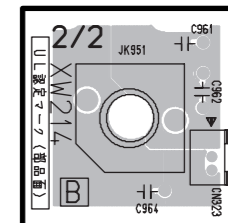
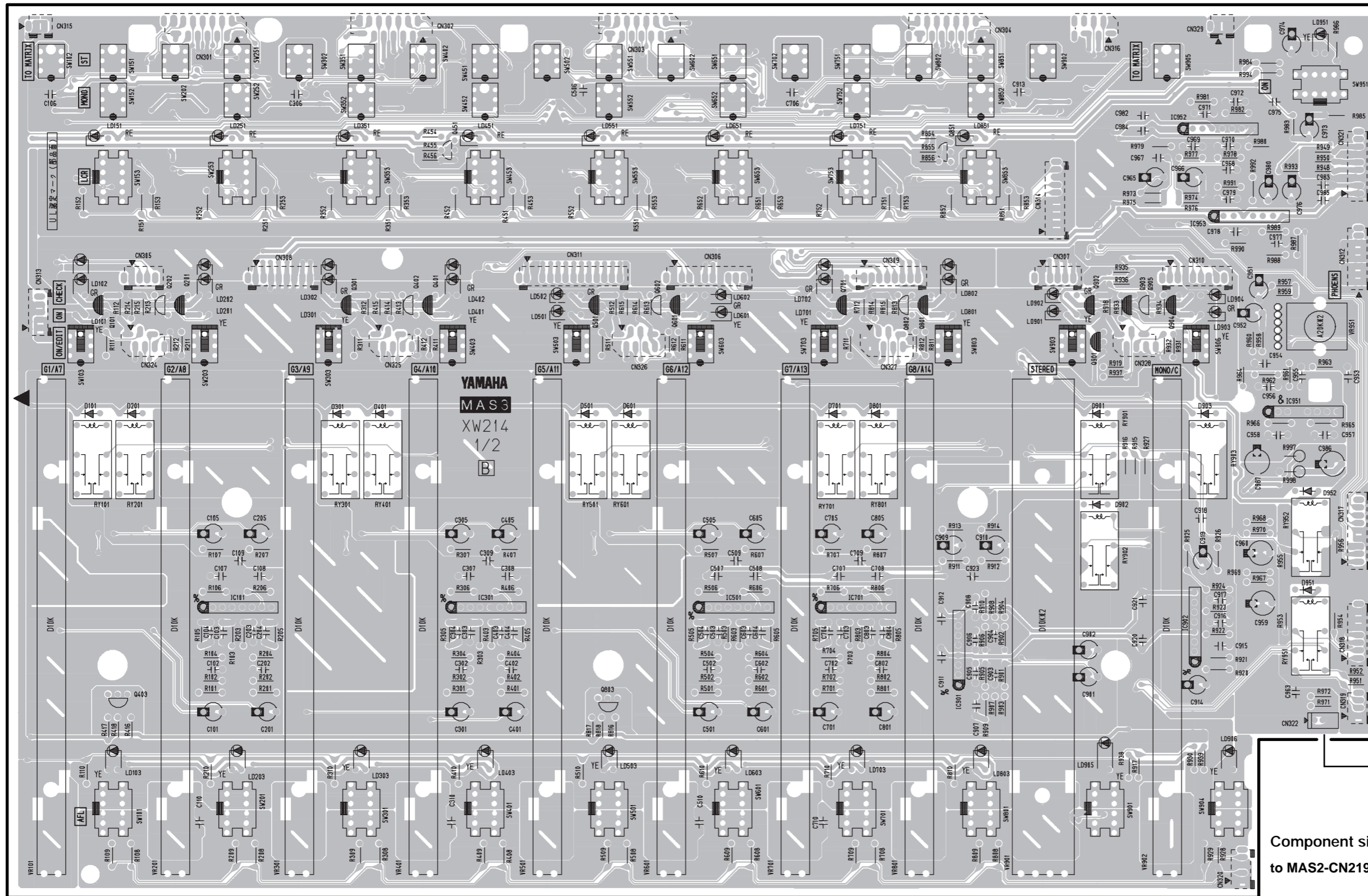
to MASPAN-CN104

to MAS2-CN219

to MAS2-CN226

• MAS3 2/2 Circuit Board

to MAS2-CN217



Component side
to MASOUT-CN321

to MAS2-CN216

to MASPAN-CN105

to MAS2-CN214

to ISRT-CN224

Component side
to MAS2-CN219

CN305:
CN324:
to MAS4-CN401

CN308:
to MASOUT-CN321

CN325:
to MAS4-CN402

CN311:
to MAS1-CN107

CN326:
to MAS4-CN403

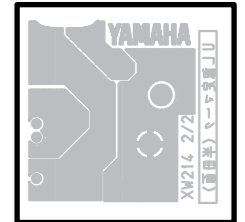
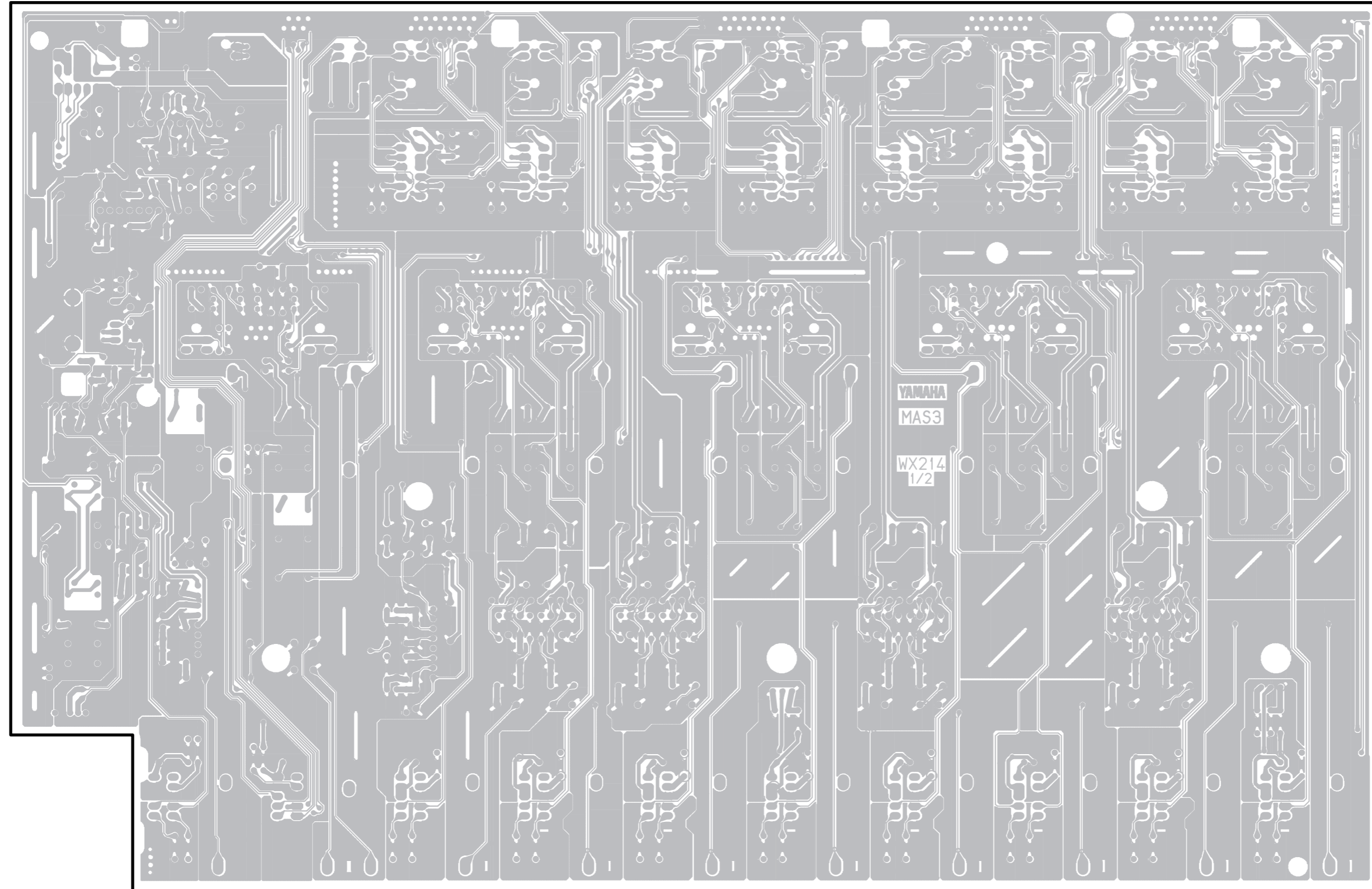
CN306:
to ISRT-CN108

CN309:
to MASOUT-CN321
CN327:
to MAS4-CN404

CN314:
to ISRT-CN221
CN307:
to ISRT-CN110

CN328:
to MAS4-CN405

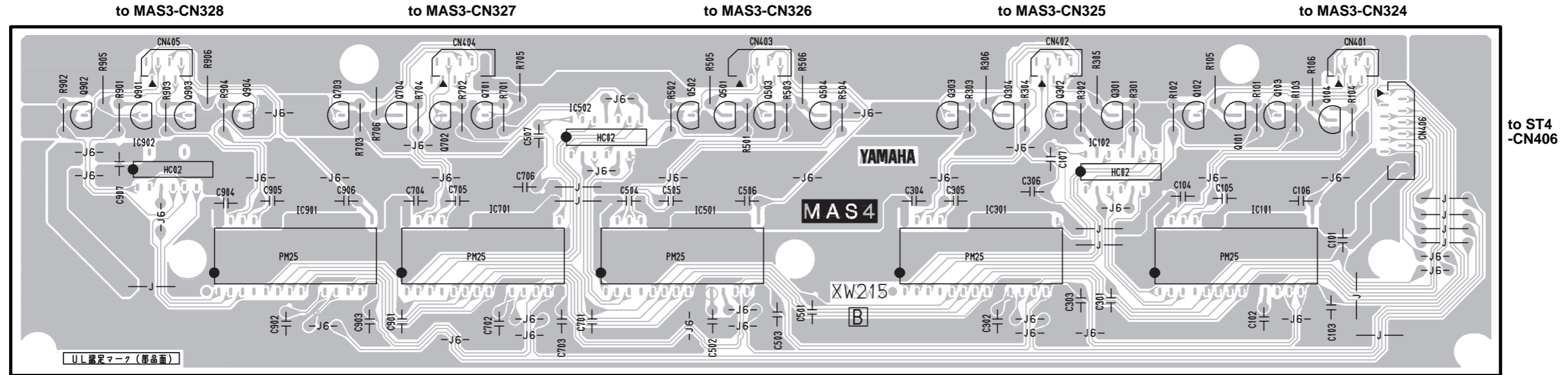
CN310:
to MASOUT-CN321



Pattern side

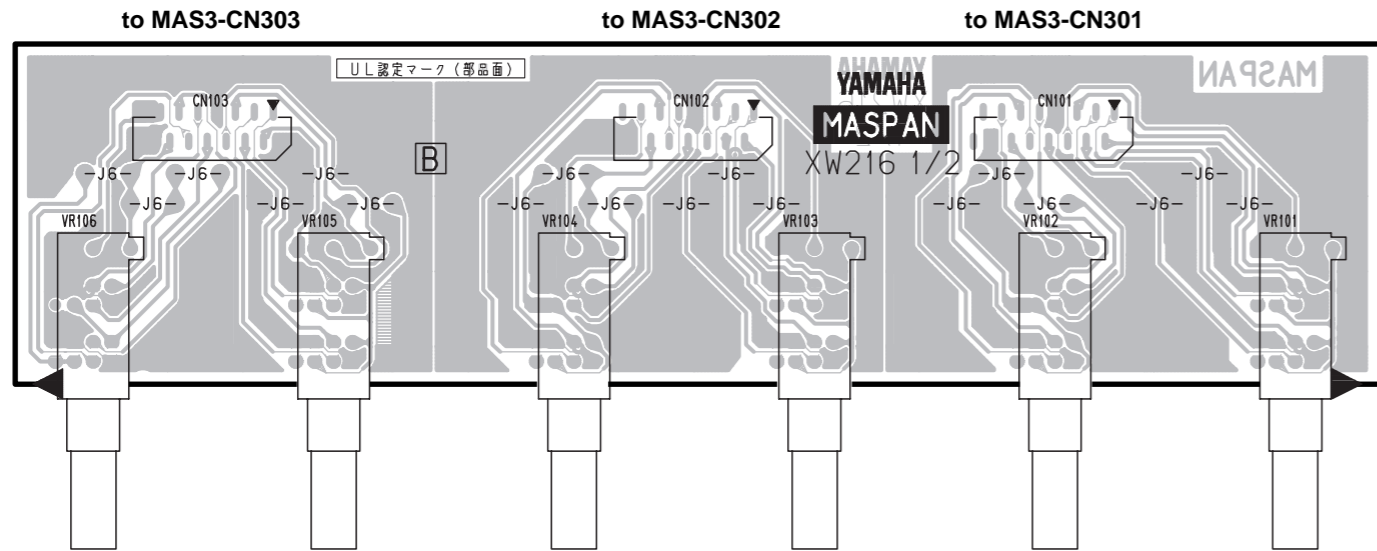
Pattern side

• MAS4 Circuit Board



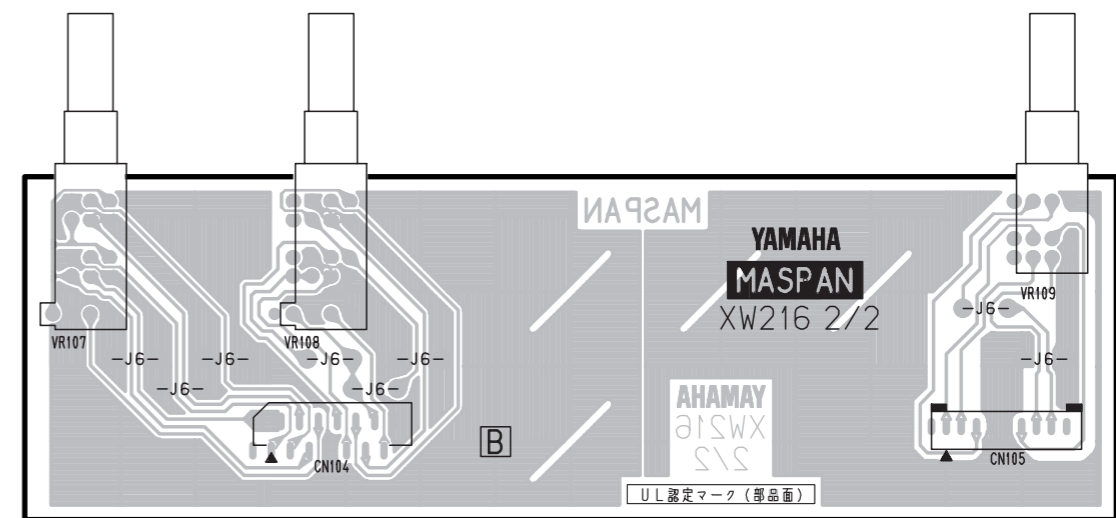
Component side

• MASPAN 1/2 Circuit Board





Component side

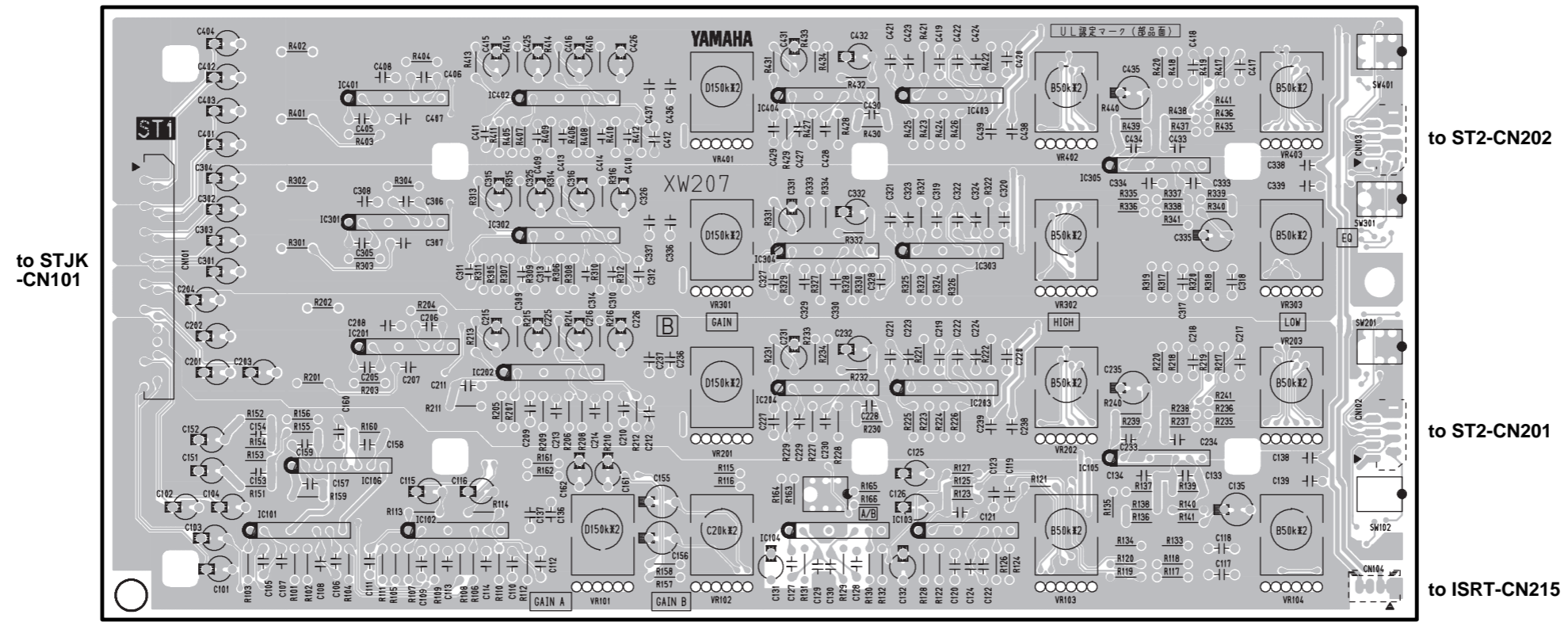
• MASPAN 2/2 Circuit Board



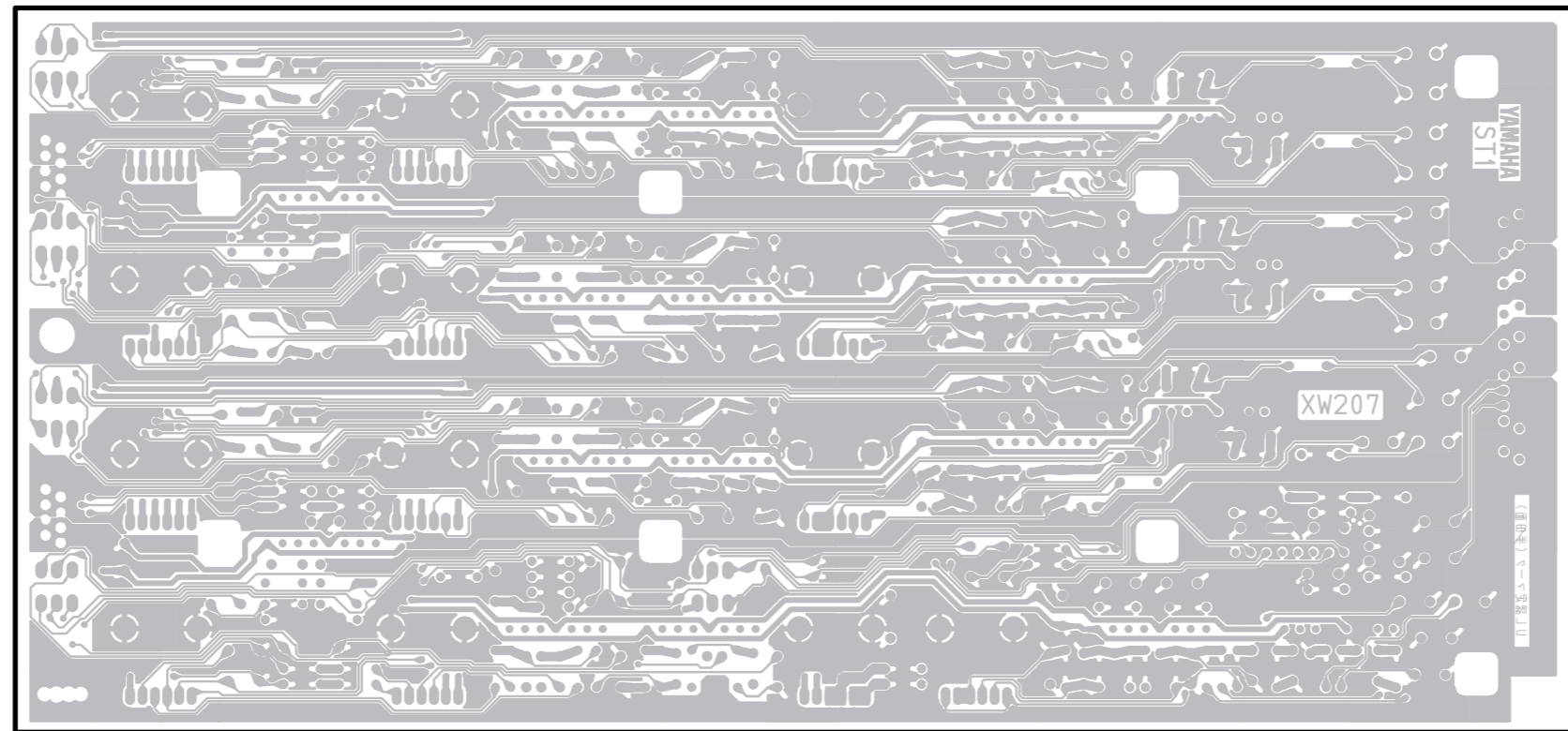
Component side

MAS4: 3NA-V431450 
 MASPAN: 3NA-V431430 

● ST1 Circuit Board



Component side



Pattern side